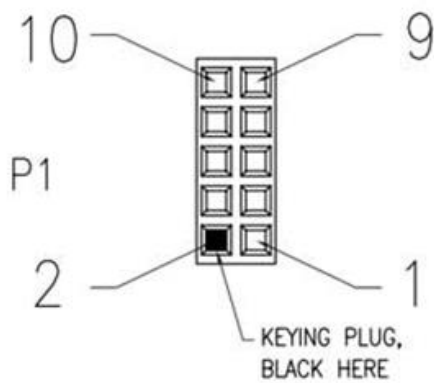


Intel NUC CEC Adapter Wiring

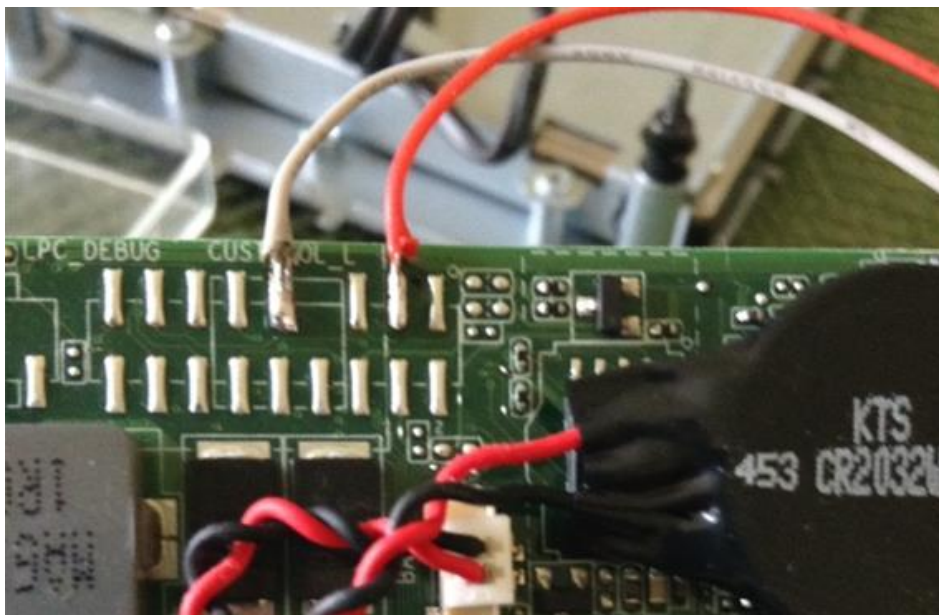
5TH GEN (BROADWELL)

Step 1 - Identify Connectors



Pin #	Wire Colour	Function
2	NA	Polarity Key
4	Black	GND
5	Blue	5V_DETECT
6	Green	USB D+
7	Orange	PWR_BUTTON
8	White	USB D-
9	Grey	5V Standby
10	Red	CEC

Step 2 - (Model Dependent) Solder Wires To Pads

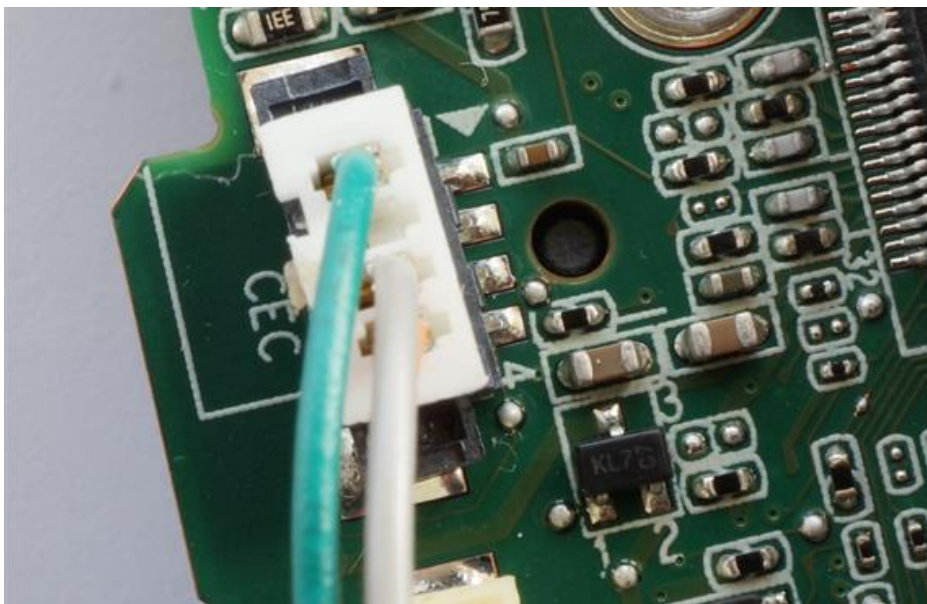
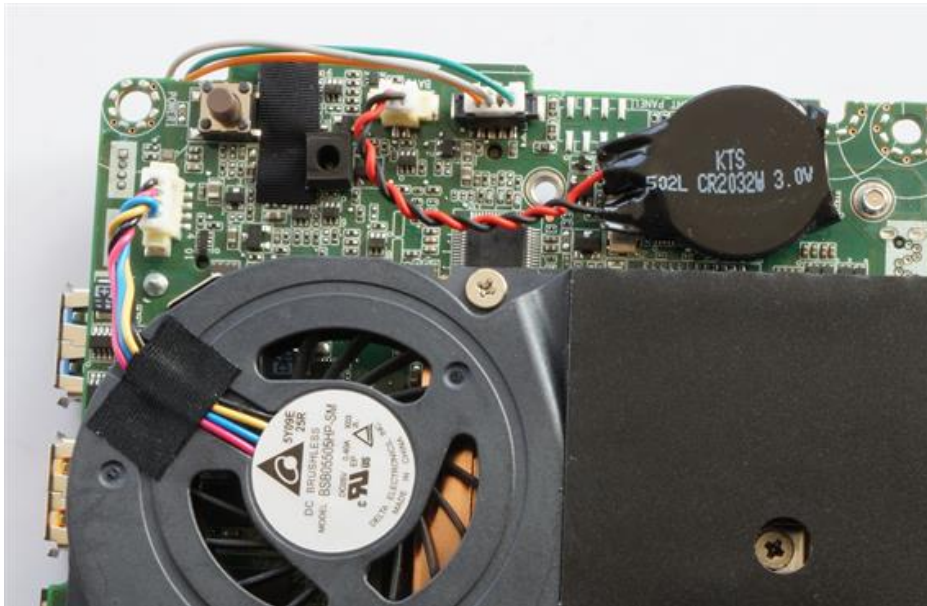


- Depending on the NUC model you own, this step may not be necessary

- If your model lacks the header fitted at the factory, remove the pre fitted connectors and strip a small amount of wire back, using a soldering iron and a small amount of solder, attach the red and grey wire as shown

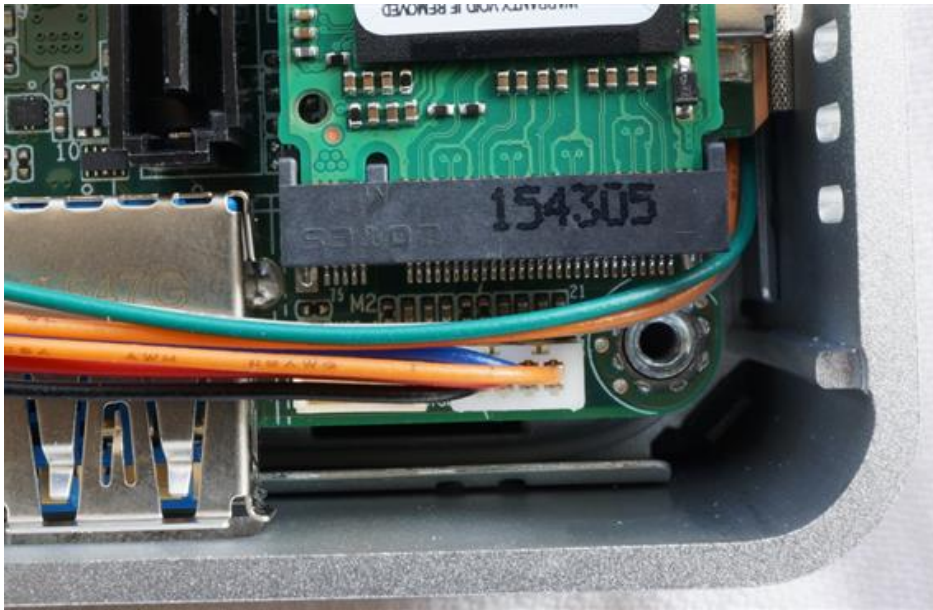
6TH GEN (SKYLAKE)

Step 1 – Connect CEC connector to underside of board



- The CEC header is located on the underside of the motherboard, you will need to remove it from the case to connect it.

Step 2 - Connect USB plug



- Connect the white plug into the corner socket

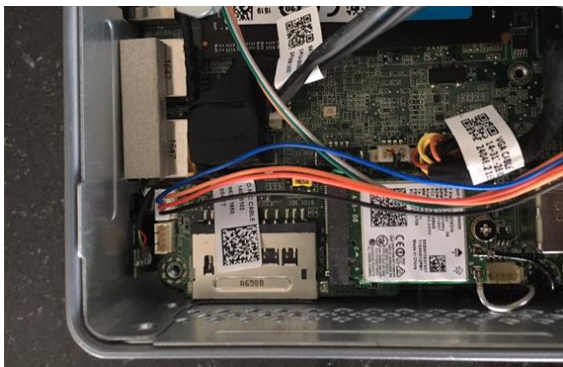
Step 3 - Mount PCB in this location (Recommended)



- We recommend attaching the supplied PCB in this location, although you may find a better location to suit your needs

6TH GEN (APOLLO LAKE)

Step 1 – Connector Locations



- Using the pictorial guides, attach the wiring loom as shown

Step 2 - PCB Final Location



- After attaching the wiring loom, you can store the connected PCB as shown